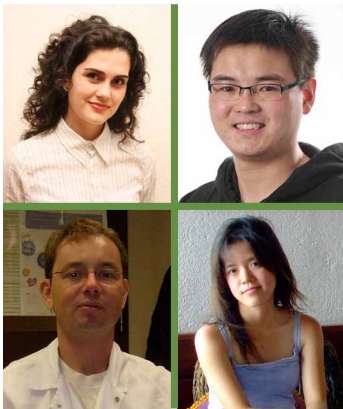


Grants and fellowships

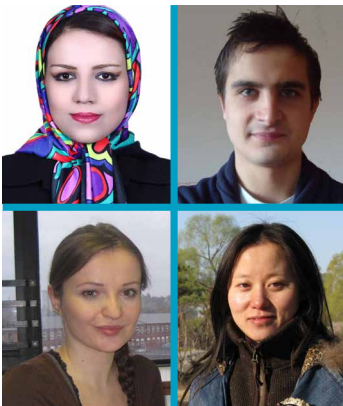
We offer a number of grants and fellowships each year to young MS researchers from low and middle income countries.



McDonald Fellowships enable recipients to travel to an established research institution to work with leading researchers in MS.

Key facts

- Two-year grant
- £30,000 per year, to cover travel and living costs



Du Pré Grants enable recipients to make short visits to established MS research or clinical centres, either to learn from each other or to carry out parts of joint research projects.

Key facts

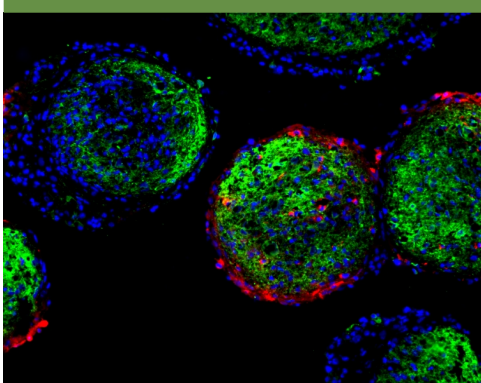
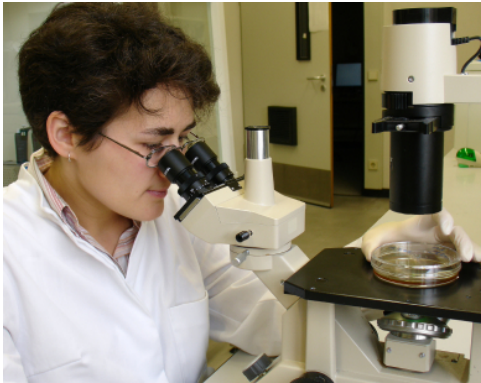
- Up to £6,000 to cover travel and living costs
- Visits last between two and six months

Deadline for applications: 30 June

For more information, contact research@msif.org
or visit www.msif.org/researchgrants



Can you host a scientist from an emerging country?



Our **McDonald Fellowship** and **Du Pré Grant** applicants need host institutions and sponsoring supervisors.

If you are interested in hosting (usually young) scientists or clinicians from low and middle income countries, we want to hear from you.

For the longer McDonald Fellowships, the host institution would receive £2,000 a year towards costs, in addition to the award made to the fellow.

Contact us to discuss what is involved and let us know about any specific areas of research you would like to sponsor.

For more information, contact research@msif.org
or visit www.msif.org/researchgrants

